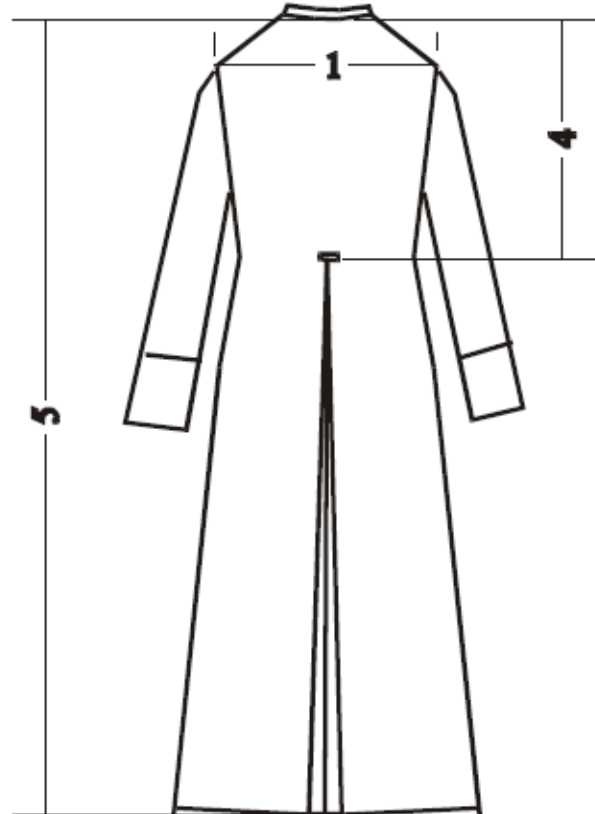
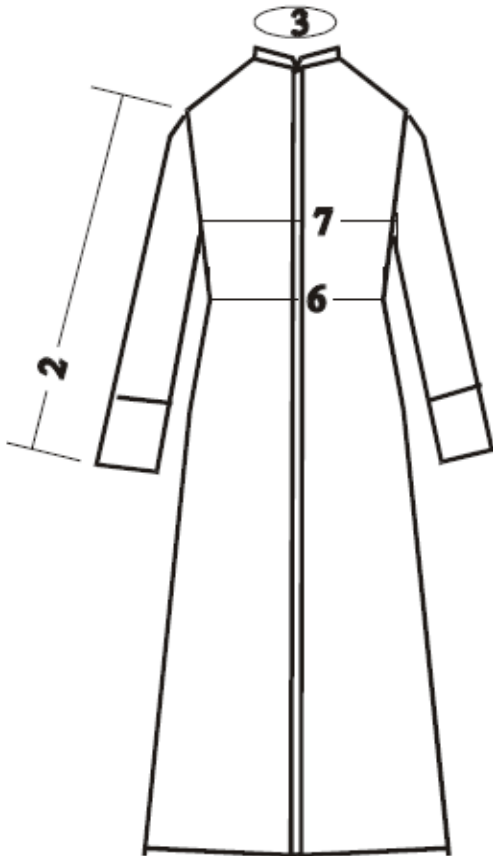


# Clergy Cassock Customer Measurement Sheet

Can customers please refer to this sheet when ordering a Clergy Cassock and provide us with the measurements listed below 1 to 7. Once we have these measurements we will check them and make the cassock to suit. If there are any queries with the measurements that you provide us, we shall contact you directly.

Please measure as below:



Measurement	Size	Any Comments
(1) Shoulder width		
(2) Arm Length		
(3) Neck (Collar)		
(4) Back Length		
(5) Drop Length		
(6) Waist (Bust)		
(7) Chest		

Please take your time and ensure your measurements are correct as we cannot change these once your cassock has been cut. As a made to measure garment, these cassocks are non returnable.  
Diagram shown above for illustration purposes only.

